

# CALLS WITH OUTSTANDING CLARITY

Noise



Voice



Best

Bluetooth Earphone

Movement

Fitness

ANC

ENC

02



# CLAMPING EAR



## HT-TW266

Comfortable pinch-ear design, long wear painless, light,  
LED real-time electric quantity digital display,  
Stable, will not fall.Hd sound quality, all the time



### Wireless Clamping Ear

Chipset: JL6973  
Bluetooth Standard: BT5.0  
Input: 5V/0.5A  
Output: 5V/0.5A  
Transmission distance: 10m

Wear: Clamping ear  
Operation: Touch  
Battery capacity: 25mAh  
Charging capacity: 250mAh



Wear for a long time without pain



# IN EAR EARPHONE



## HT-TW260

With the appearance of zinc alloy iron case, fashion half - in - ear type, mini Bluetooth headset

### Wireless In-ear

Chipset: JL6973

Bluetooth Standard: BT5.0

Input: 5V/0.5A

Output: 5V/0.5A

Transmission distance: 10m

Wear: In-ear

Operation: Touch

Battery capacity: 25mAh

Charging capacity: 250mAh





# HANGGING EAR



**POWERFULL SOUND FIELD YOU CAN'T IMAGINE**

108 Times Professionally Acoustic Tuned Premium Sound to Satisfy Your Auditory Feast

## HT-TW272

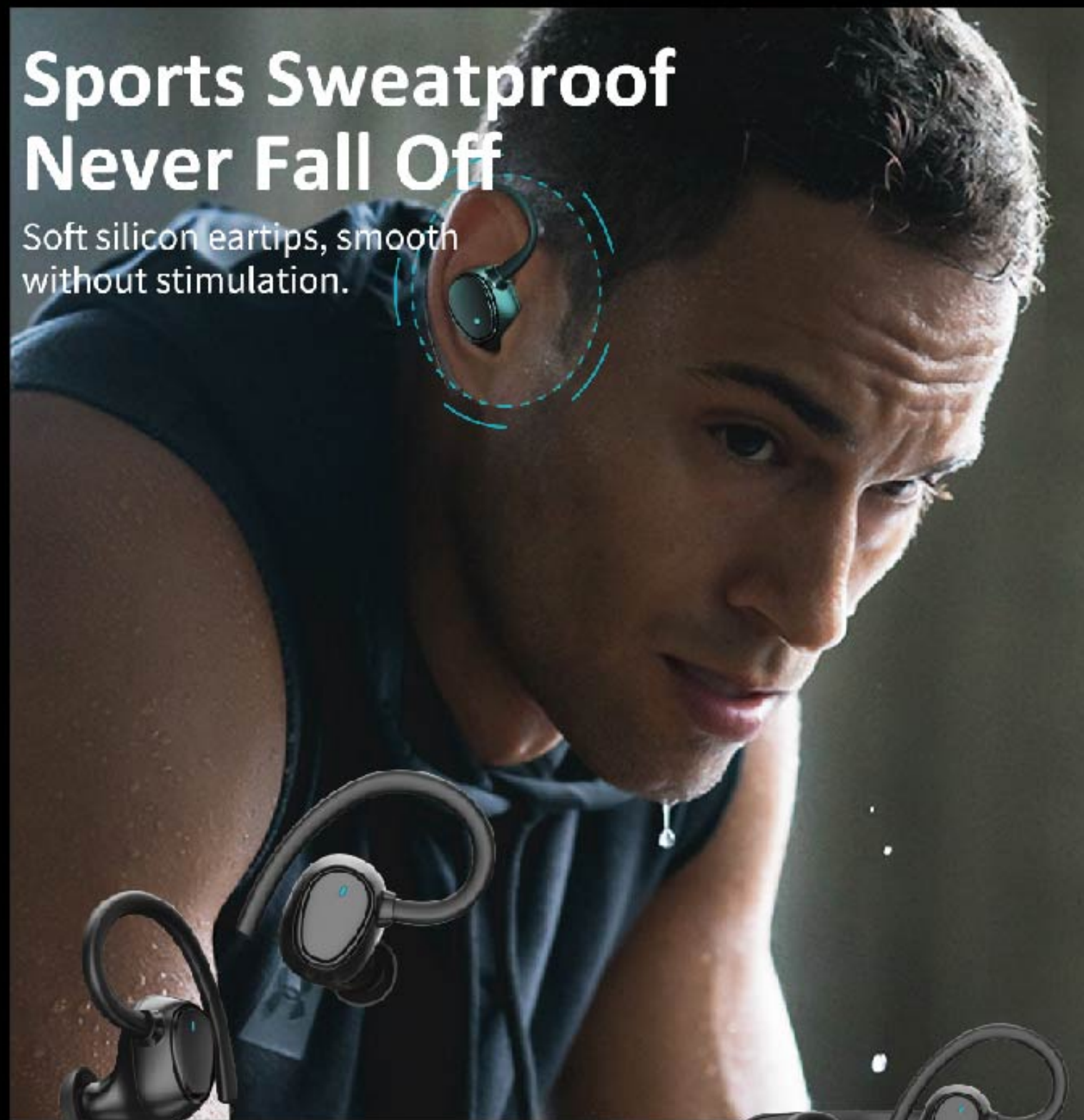
Chipset: JL6983  
Bluetooth Standard: BT5.3  
Input: 5V/0.5A  
Output: 5V/0.5A  
Transmission distance: 10m

Wear: Hanging ear  
Operation: Touch  
Battery capacity: 80mAh  
Charging capacity: 400mAh



## Sports Sweatproof Never Fall Off

Soft silicon eartips, smooth without stimulation.



## HT-TW265

Chipset: JL6973  
Bluetooth Standard: BT5.3  
Input: 5V/0.5A  
Output: 5V/0.5A  
Transmission distance: 10m

Wear: Hanging ear  
Operation: Touch  
Battery capacity: 40mAh  
Charging capacity: 250mAh







**MODEL**  
**HT-TW269**

**PRODUCT PARAMETER**

Chipset: JLAC6983  
Bluetooth Standard: BT5.3  
Wear: Hanging ear  
Operation: Touch  
Battery capacity: 40mAh  
Charging capacity: 800mAh  
Transmission distance: 10m



**MODEL**  
**HT-TW270**

**PRODUCT PARAMETER**

Chipset: JLAC6973  
Bluetooth Standard: BT5.0  
Wear: Hanging ear  
Operation: Touch  
Battery capacity: 25mAh  
Charging capacity: 250mAh  
Transmission distance: 10m



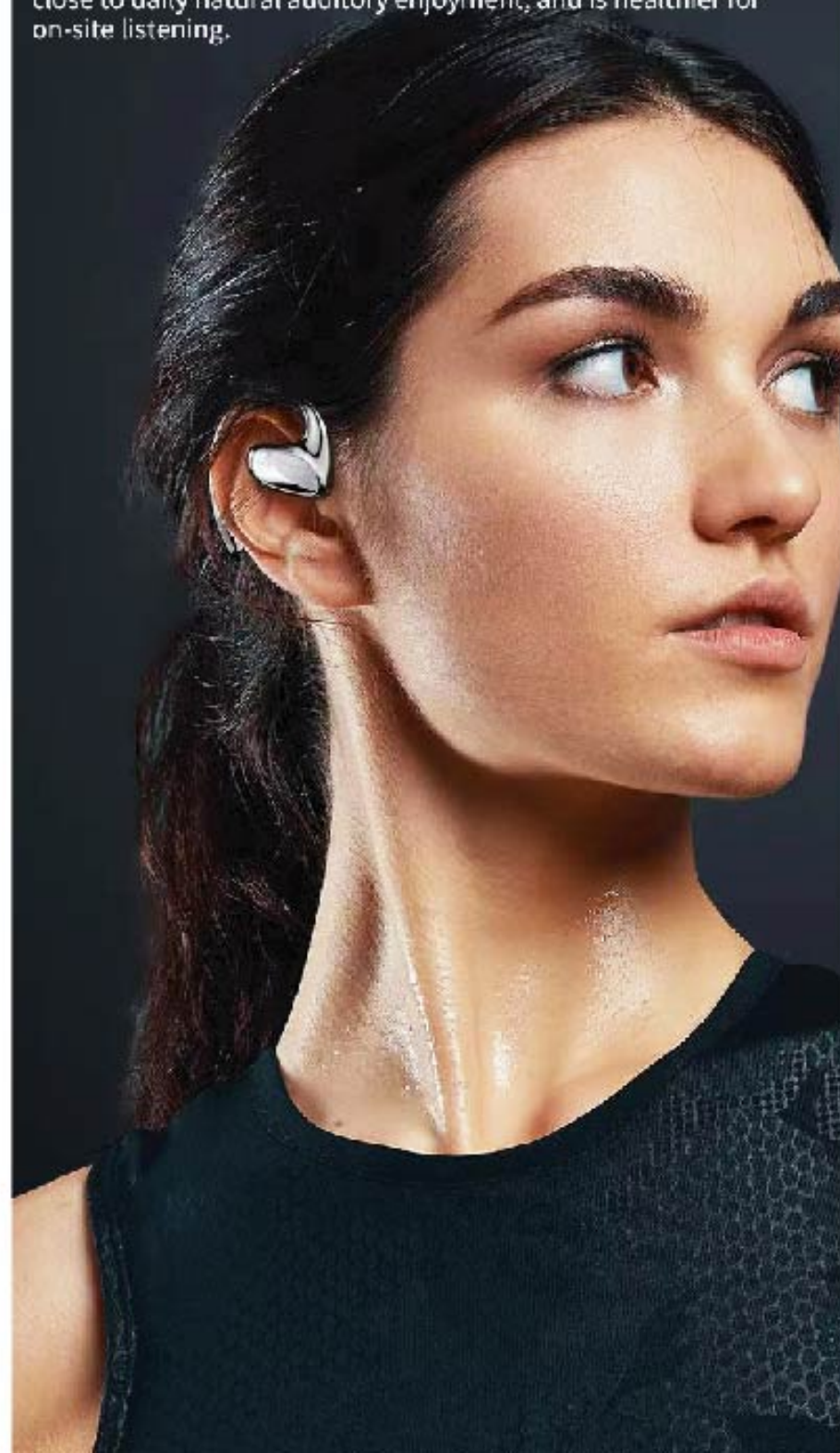
**MODEL**  
**HT-TW267**

**PRODUCT PARAMETER**

Chipset: AB5617  
Bluetooth Standard: BT5.3  
Wear: Hanging ear  
Operation: key  
Battery capacity: 80mAh  
Transmission distance: 10m

## Supra-aural earphone Portable and comfortable

The listening mode without ear plug does not generate a closed loop with the ear canal, does not generate a stethoscope effect, does not expand the eardrum, is transparent and comfortable, is close to daily natural auditory enjoyment, and is healthier for on-site listening.



**MODEL**  
**HT-TW268**

**PRODUCT PARAMETER**

Chipset: JLAC6983  
Bluetooth Standard: BT5.3  
Wear: Hanging ear  
Operation: Touch  
Battery capacity: 40mAh  
Charging capacity: 800mAh  
Transmission distance: 10m





# BONE CONDUCTION

Open Ear to Listen  
**NO IN EAR NO HURT**

Listen to music and aware of danger on road  
when running driving ,hiking ,swimming



## MOVEMENT

### BONE CONDUCTION

HT-TW263

- Chipset: Ows7006F8
- Bluetooth Standard: BT5.0
- Wear: Bone conduction
- Operation: key
- Battery capacity: 180mAh
- Transmission distance: 10m



## MOVEMENT

### BONE CONDUCTION

HT-TW264

- Chipset: 7003
- Bluetooth Standard: BT5.0
- Wear: Bone conduction
- Operation: Touch
- Battery capacity: 150mAh
- Transmission distance: 10m



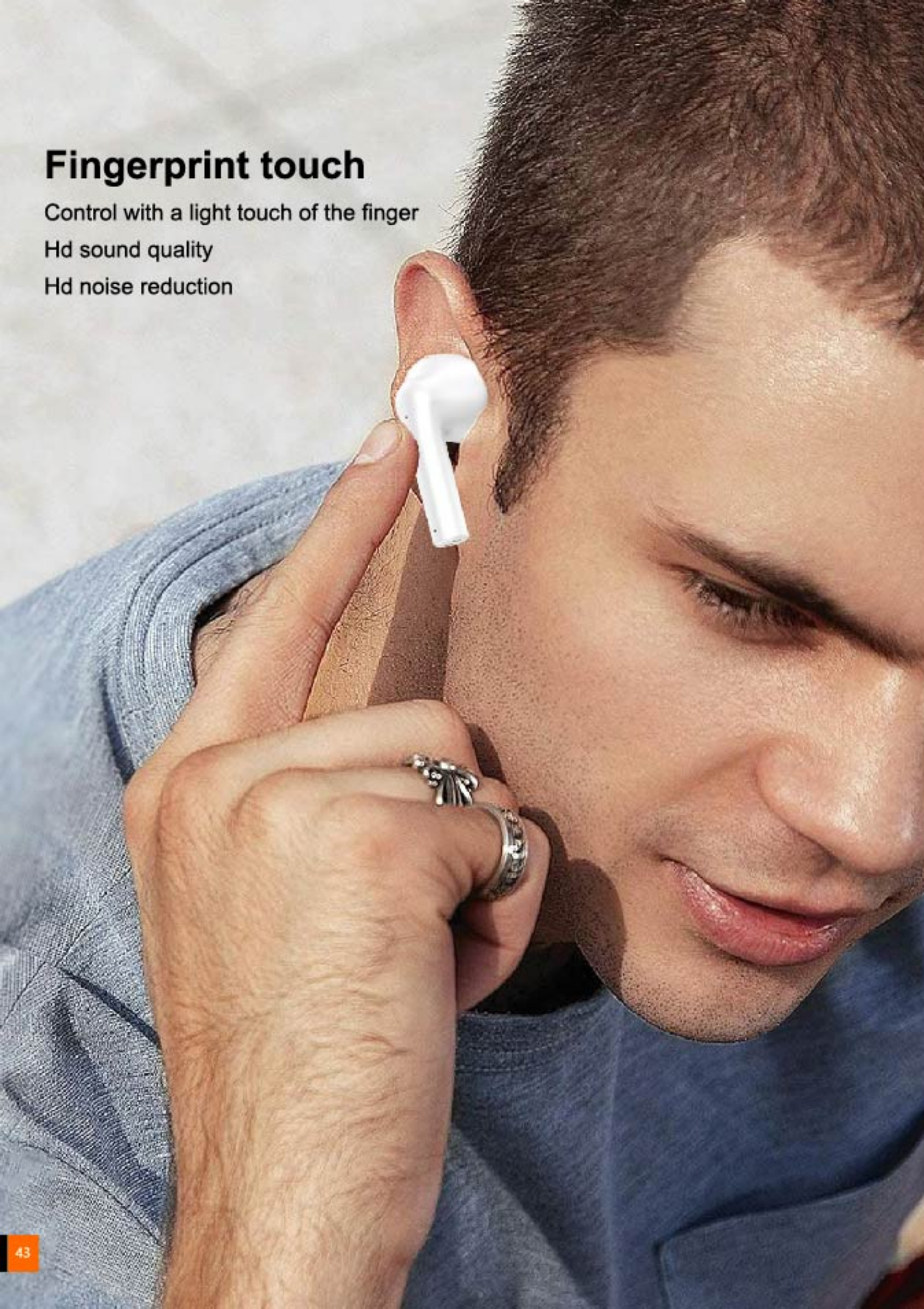


## Fingerprint touch

Control with a light touch of the finger

Hd sound quality

Hd noise reduction



## Super long endurance



## HT-TW208

With the appearance of zinc alloy iron case, fashion half - in - ear type, mini Bluetooth headset

## Wireless In-ear

Chipset: JL6973

Bluetooth Standard: BT5.0

Input: 5V/0.5A

Output: 5V/0.5A

Transmission distance: 10m

Wear: In-ear

Operation: Touch

Battery capacity: 25mAh

Charging capacity: 250mAh

In-ear type  
Long time no pain







**MODEL**  
HT-TW257 ANC

**PRODUCT PARAMETER**

Chipset: AB5636F	Battery capacity: 35mAh
Bluetooth Standard: BT5.3	Charging capacity: 300mAh
Wear: In-ear	Transmission distance: 10m
Operation: Touch	



**MODEL**  
HT-TW276

**PRODUCT PARAMETER**

Chipset: JLAC6973	Battery capacity: 60mAh
Bluetooth Standard: BT5.3	Charging capacity: 400mAh
Wear: In-ear	Transmission distance: 10m
Operation: Touch	



**MODEL**  
HT-TW258 ANC

**PRODUCT PARAMETER**

Chipset: AB5636F	Battery capacity: 35mAh
Bluetooth Standard: BT5.3	Charging capacity: 300mAh
Wear: In-ear	Transmission distance: 10m
Operation: Touch	



**MODEL**  
HT-TW274

**PRODUCT PARAMETER**

Chipset: JLAC6973	Battery capacity: 40mAh
Bluetooth Standard: BT5.3	Charging capacity: 250mAh
Wear: In-ear	Transmission distance: 10m
Operation: Touch	



**MODEL**  
HT-TW261

**PRODUCT PARAMETER**

Chipset: JLAC6983	Battery capacity: 25mAh
Bluetooth Standard: BT5.3	Charging capacity: 280mAh
Wear: In-ear	Transmission distance: 10m
Operation: Touch	



**MODEL**  
HT-TW275

**PRODUCT PARAMETER**

Chipset: JLAC6983	Battery capacity: 40mAh
Bluetooth Standard: BT5.3	Charging capacity: 250mAh
Wear: In-ear	Transmission distance: 10m
Operation: Touch	



**MODEL**  
HT-TW271

**PRODUCT PARAMETER**

Chipset: JLAC6973	Battery capacity: 25mAh
Bluetooth Standard: BT5.3	Charging capacity: 250mAh
Wear: In-ear	Transmission distance: 10m
Operation: Touch	



**MODEL**  
HT-TW273

**PRODUCT PARAMETER**

Chipset: JLAC6983	Battery capacity: 40mAh
Bluetooth Standard: BT5.3	Charging capacity: 280mAh
Wear: In-ear	Transmission distance: 10m
Operation: Touch	